

Supply Chain 2012

6th Annual NASA Supply Chain Quality Assurance Conference

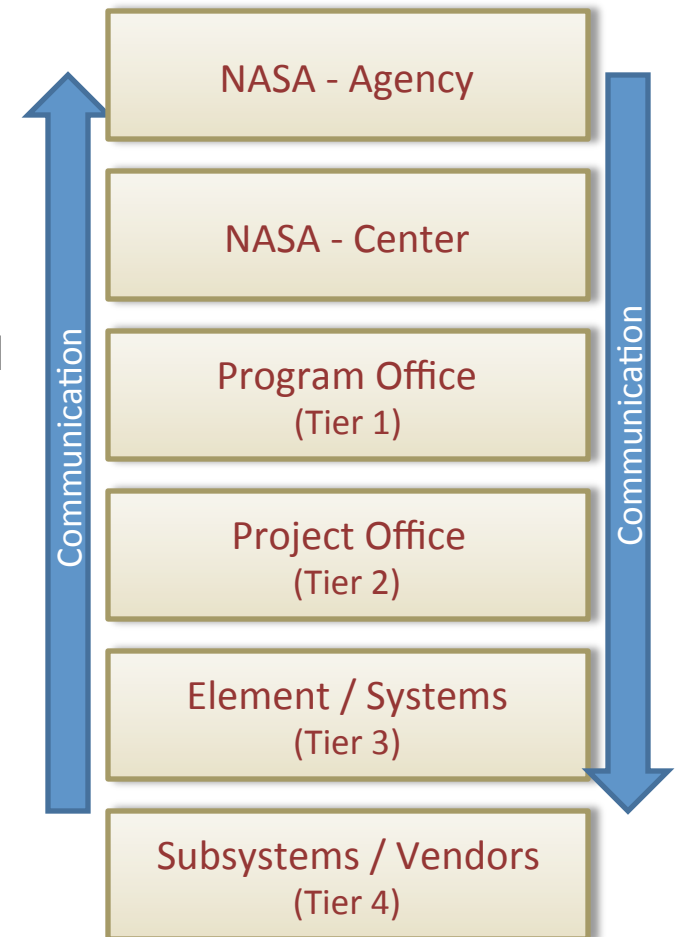
October 16-18, 2012

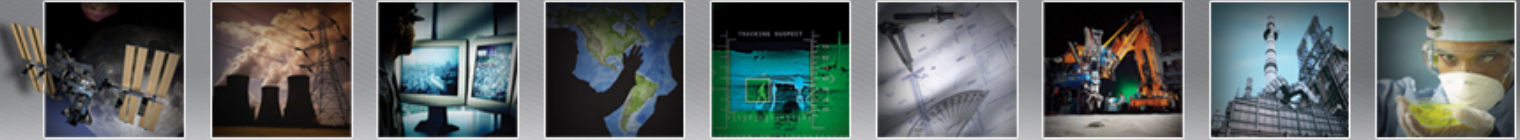
Panel Session: Mission Assurance
Challenges in Space Flight Projects
Vernon (Bill) Wessel, VP, ARES Corporation



Sharing SMA Information

- **Sharing SMA information within a NASA project**
- **Sharing SMA information at the NASA Center level**
- **Sharing SMA information at the NASA level**
- **Sharing SMA information with NASA suppliers**





Sharing SMA Information Within a NASA Project

- **Integrate Safety & Mission Assurance (SMA) information across the SMA disciplines to effectively provide project support (avoid SMA silos)**
- **Work across the project disciplines to maximize timely use of SMA information, i.e. risk management, engineering, test & development, fabrication, procurement, etc.**
- **What tools and processes have you found helpful in integrating and sharing SMA information within a project?**



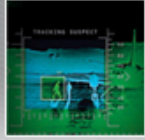
Sharing SMA Information at the NASA Center Level

- **Evaluate quality and timeliness of critical SMA milestones and products for Center projects, helping to ensure Mission Success**
- **Allow resources to be adjusted as SMA issues and/or opportunities surface**
- **Use lessons learned to drive effective and efficient project completion**
- **Document and maintain project lessons learned for future application across Center**
- **How does your Center use their SMA information?**



Sharing SMA Information at the NASA Level

- **Lead process and requirement for lessons learned captured and applied to NASA projects**
- **Strategically develop SMA discipline training**
- **Prioritize SMA discipline needs looking across the NASA mission**
- **Support the resolution of tough SMA technical challenges**
- **Drive consistent evaluation of failures and discrepancies to determine common cause and prevent recurrence**
- **What other assets could be gained from NASA level SMA information?**



Sharing SMA Information With Suppliers

- **Requirements (SMA Information) Flow-down and Supplier Quality (SMA Information) return**
 - Frequently not viewed as a team effort
 - We have/had requirements to flow-down (feedback?)
 - More customer inquiry/follow-up can help to ensure information flows (bi-directional)
 - Especially important with prime/sub arrangements
 - Inquiries spur additional thoughts/discussion
 - SMA information exchanged that otherwise is lacking
 - Build/strengthen customer/vendor relationship
 - It's about exchanging and understanding "SMA Information"
 - Not just requirement
- **What have you found helpful and effective in "Sharing SMA Information With Suppliers"?**



Sharing SMA Information (Let's Share)

- **What tools and processes have you found helpful in integrating and sharing SMA information within a project?**
- **How does your Center use their SMA information?**
- **What other assets could be gained from NASA level SMA information?**
- **What have you found helpful and effective in “Sharing SMA Information With Suppliers”?**